

**Attachment 17**

**Hansard and Budget Papers in relation to the application of the sale proceeds**

See attached.

Mr BARNETT replied:

- (1) I am not able to ensure that a kindergarten program for four year old children will be offered at West Midland Primary School in 1998. This Government will not be able to guarantee every child a place in a kindergarten program until 1999.
- (2) I am aware that during 1997 the Education Department purchased two buildings, one of which is a preprimary facility, on a site adjacent to the West Midland Primary School.
- (3) I am aware that 22 expressions of interest in a kindergarten program at West Midland Primary School have been received. Only 14 of these are from children within the West Midland Primary School boundaries. Several of the "out of boundary children" have already been placed at neighbouring schools.
- (4) Although the kindergarten programs at several primary schools in the vicinity of West Midland are full, additional teaching time has been allocated to Guildford Primary School to allow them to offer kindergarten places to children on waiting lists. There are also vacancies in the kindergarten program at Midvale Primary School.

#### BLACKADDER CREEK CONTAMINATION

2767. Mrs ROBERTS to the Minister for Water Resources:

- (1) What was the extent of the contamination of Blackadder Creek after a sewer main burst at Midland Caravan Park?
- (2) Are there any concerns for children swimming or playing in the creek?
- (3) What actions are being taken to ensure such an event does not reoccur?

Dr HAMES replied:

- (1) Bacteriological results taken on 6 November 1997 have indicated that the spill extended to approximately 350m downstream from the Midland Caravan Park. Most of the sewage was recovered by a suction tanker. Some of the affected areas were disinfected and the contaminated soil removed. No observed impact was seen in the creek about 500m downstream from the caravan park or in the river located about 2.5km away.
- (2) The creek is not easily accessible and it is not often used for recreation purposes. There was little flow in the creek at that time and the health officers from the Shire of Swan did not indicate any concern on the matter.
- (3) The Water Corporation repaired the fractured sewer line caused by a stormwater drain from the adjoining property eroding the soil supporting the sewer main. The Shire of Swan has directed the open drain to be piped into Blackadder Creek. This will prevent further soil erosion. The Water Corporation intends to relocate the sewer line further away from the creek sometime this year.

#### STATE DEBT - INCLUSION OF DAMPIER TO BUNBURY PIPELINE DEBT

2772. Mr BROWN to the Treasurer:

- (1) What was the nett State debt as at 30 June 1996?
- (2) Does the nett State debt figure include moneys owed on the Dampier to Bunbury natural gas pipeline?
- (3) How much was owed on the pipeline as at 30 June 1996?
- (4) Does the Government expect the nett State debt to be reduced by the sale of the pipeline?
- (5) If so, by what amount?

Mr COURT replied:

- (1) \$6 758 million as at 30 June 1996.
- (2) Yes.
- (3) \$950.9 million.
- (4) Yes.
- (5) This amount will not be known until the sale has been finalised.

## PRIMARY SCHOOLS - AIRCONDITIONING

2775. Mr BROWN to the Minister for Education:

- (1) Does the Government have any plans to air condition primary schools?
- (2) What primary schools in the metropolitan area will be provided with air conditioning in the 1997-98 financial year?
- (3) Have plans been made to air condition the Anzac Terrace Primary School?
- (4) If so, when?
- (5) If not, why not?

Mr BARNETT replied:

- (1)-(5) In response to parent concerns earlier this year about children working on very hot days in schools without air-cooling, a review of the air-cooling policy has been undertaken. All schools will be advised of the outcome of this review after the recommendations have been considered.

## FITZGERALD RIVER NATIONAL PARK - IMPACT OF ROAD

2778. Dr EDWARDS to the Minister for the Environment:

- (1) Has the Minister received advice as to the potential impact of a road through the Fitzgerald River National Park?
- (2) If so, what advice has been received?
- (3) Has this advice been communicated to the Minister for Transport?
- (4) Has the Minister received a request for advice as to the impact of a road through the Fitzgerald River National Park from the Minister for Transport?

Mrs EDWARDES replied:

- (1) No. However, I am well aware of the conservation significance of the Park.
- (2)-(3) Not applicable.
- (4) No. There is no formal proposal for a road through the Park.

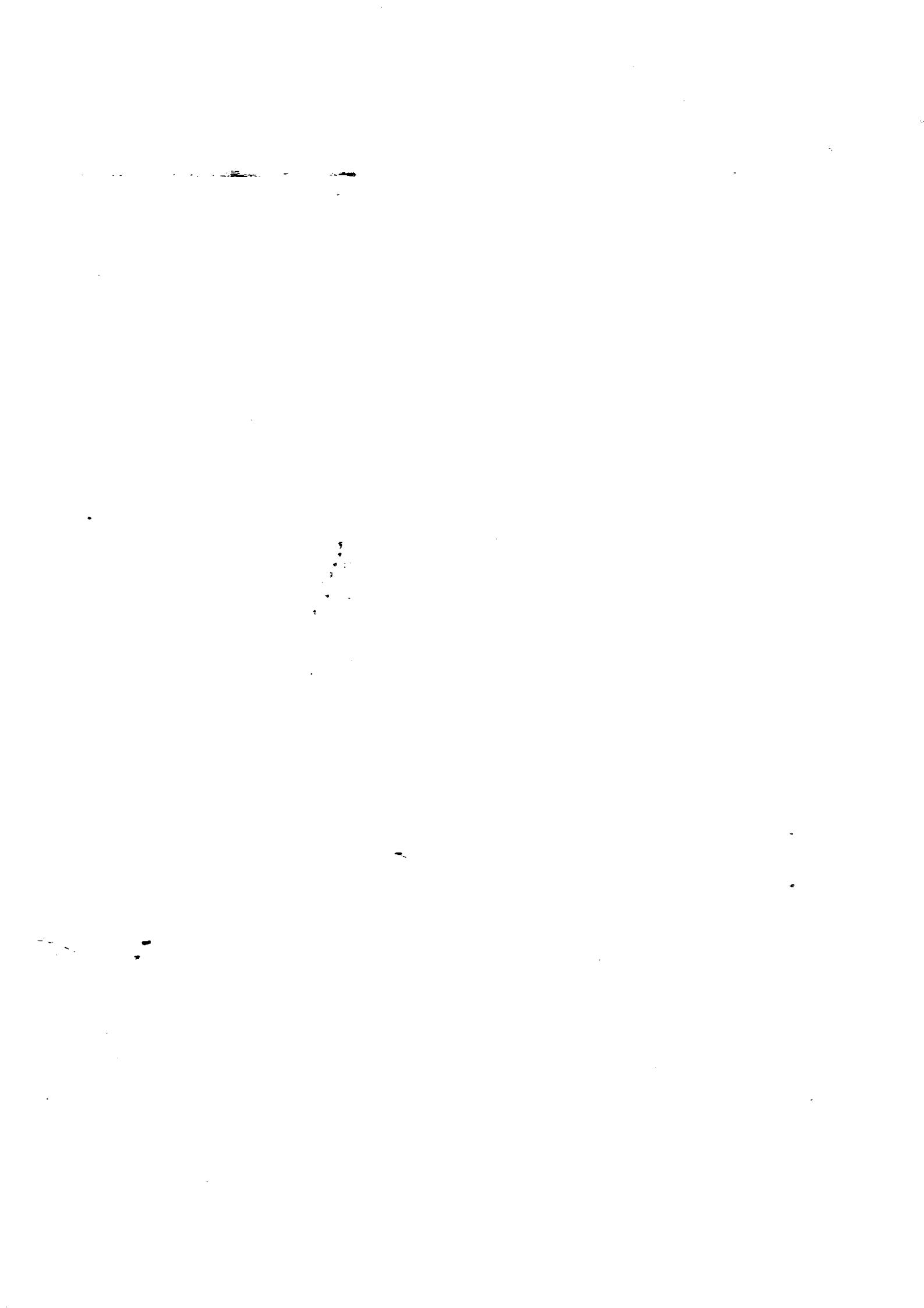
## BUCKLAND HILL PRIMARY SCHOOL - BORE CONTAMINATION

2780. Dr EDWARDS to the Minister for the Environment:

- (1) Has the Minister requested monitoring of the bore in the North West corner of the Buckland Hill Primary School due to concerns over mobility of cyanide complexes in the Minim Cove containment cell during the winter months and the subsequent possibility of contamination?
- (2) If not, why not?
- (3) Has advice been provided to Buckland Hill Primary School on the potential for contamination of the bore in order to allay any concerns of parents and teachers?
- (4) If not, why not?
- (5) Can the Minister give an assurance to the teachers and parents of Buckland Hill Primary School that mobility of cyanide complexes in the wettest months will not result in contamination of the school bore?
- (6) If not, why not?

Mrs EDWARDES replied:

- (1) No.
- (2) LandCorp has already included the bore at Buckland Hill Primary School within their monitoring network.
- (3)-(4) No. Monitoring results to present has indicated that likely contaminants, including cyanide, are in most cases below detection and well within National Health and Medical Research Council Drinking Water



## EXPENDITURE MEASURES

### *FEATURE 1*

A major influence on the 1998-99 and outyear expenditure estimates was the sale of the Dampier to Bunbury Natural Gas Pipeline which provided the budget flexibility to implement the following measures:

- The payment of \$1.8 billion towards retirement of public sector debt;
- An injection of \$244 million into the State Development Fund to be applied towards infrastructure developments and capital projects over the forward estimates period, including \$100 million for computers in schools, \$100 million for a Convention and Exhibition Centre, \$20 million for capital projects in regional Western Australia, and \$10 million for the Community Sporting and Recreation Facilities Fund; and
- Additional funding of \$295 million over the forward estimates period for the introduction of full concurrent funding of the West State Super Scheme for all liabilities incurred after 30 June 1998.

Additional funding of \$43 million has also been provided to clear the estimated outstanding liability in the Government Insurance Fund over the forward estimates period. This initiative completes the final phase of the establishment of fully funded insurance arrangements, known as RiskCover, for public sector agencies.

In addition to the above expenditure measures, the following major initiatives have been provided within agencies' forward estimates. Amounts provided are over the forward estimates period unless otherwise indicated.

### **Education**

The Education Department's 1998-99 allocation has increased by \$70.7 million or 3.3% in real terms to \$1,231.7 million. This represents 17.3% of total budget outlays. In addition to the \$100 million for computers in schools, other initiatives within the Education sector are outlined below:

- \$1.4 million has been provided in 1998-99 increasing to \$3.2 million per year thereafter to reduce class sizes in school years one to three;
- Increased time for duties other than teaching for primary school teachers has been provided for with the allocation of \$0.9 million in 1998-99 increasing to \$3.9 million per annum by the year 2000-01;
- \$2.0 million has been allocated in 1998-99 increasing to \$4.1 million per annum by 2000-01 to expand the Department's Country Incentives Scheme to encourage teachers to remain longer in remote areas; and

## FINANCING TRANSACTIONS

### INTRODUCTION

Financing transactions show how the State allocates its surpluses or funds its deficits. The GFS presentation of these transactions include:

- Net advances from other levels of government (which include loans made by government to the private sector and their repayment);
- Net borrowings (generally borrowing and lending with the non-public sector);
- Increases in provisions (which are used to remove the impact of major accrued expenses and revenue in the PTE sector to arrive at the derived cash surplus/deficit measure); and
- Other financing transactions (including movements in payables, receivables and cash balances).

Total financing transactions indicate the various ways in which the public sector draws on or adds to national savings. Western Australia's surpluses of the recent past have made a positive contribution to national savings, making more funds available to other sectors for investment purposes.

Net debt increases over the next two years but not all this movement is attributable to borrowings. It also includes movements in cash holdings and other non-borrowing aggregates such as loans to and from other sectors.

### GROSS AND NET DEBT

The sale of the Dampier to Bunbury natural gas pipeline in 1997-98 enabled public sector net debt to decline to \$4,694 million at 30 June 1998. This was the lowest net debt level recorded. As was projected in last year's budget, continuing substantial capital works programs will cause net debt to rise over the period to 30 June 2001, after which reductions in debt levels are expected. The increase in the short term is projected to result in a net debt peak of around \$5,915 million at 30 June 2001. This level of net debt is lower than for any year prior to the sale of the gas pipeline.

