



**Application  
for  
Electricity Transmission Licence**

**Alinta Energy Transmission (Chichester) Pty Ltd**

**Summary for Public Consultation**

**July 2018**

---

## Contents

1	Introduction.....	3
2	Corporate Information .....	3
3	Financial Information .....	3
4	Technical Information .....	4
5	Public Interest Information .....	4
6	Licence Supply and Operating Areas .....	5

---

## 1 Introduction

This application is for an Electricity Transmission Licence to build, own and operate a power transmission line (**PTL**) in the Pilbara region of Western Australia.

The proposed 220kV PTL will extend approximately 65km westward from Roy Hill to the iron ore mines at Christmas Creek and Cloudbreak,

The PTL will supply power generated at Newman Power Station to the iron ore mine sites via the existing Newman to Roy Hill transmission line.

## 2 Corporate Information

The applicant for this Electricity Transmission Licence is Alinta Energy Transmission (Chichester) Pty Ltd (**AETC**) (ABN 97 623 412 635).

AETC is an Australian proprietary company with three directors, limited by shares. The newly-established entity is a wholly owned subsidiary of Alinta Energy Pty Limited (**Alinta Energy**).

The core activities of AETC are to build, own and operate transmission assets in the Pilbara region.

## 3 Financial Information

The audited financial reports for Alinta Energy for the 2015, 2016 and 2017 financial years have been provided as part of this licence application. These consolidated financial statements have been prepared in accordance with the requirements of the Australian Accounting Standards Board and the International Accounting Standards Board.

In April 2018, Moody's Investors Service upgraded Alinta Energy's Long Term Corporate Family Rating from Ba1 with a stable outlook to Ba1 with a positive outlook. The revised rating recognises the company's earnings resilience in its core west coast business and confidence that it will build scale in the National Electricity Market.

Alinta Energy achieves compliance with its legislated and licence obligations through the application of policies, processes and systems. Alinta Energy's compliance and risk management systems are underpinned by a Compliance Policy and Risk Management Policy approved by the Board. Alinta Energy's Enterprise Risk Management Framework has been developed in accordance with leading industry risk management standards. Alinta Energy's Internal Audit Plan has been developed with consideration of the material risks to the business and is updated annually.

---

## 4 Technical Information

The proposed PTL will be comprised of approximately 65 kilometres of 220kV single circuit conductor and optical fibre ground wire to provide shielding from lightning, strung between approximately 150 towers.

The PTL will extend between the existing Roy Hill substation to a new substation at Cloudbreak Mine via a new substation near Christmas Creek Mine.

Existing substations at Christmas Creek and Cloudbreak will be tied in to the new transmission line.

Construction is scheduled to occur in two stages. The first stage will include the construction of the Roy Hill to Christmas Creek section of PTL and the new substation at Christmas Creek. The second stage will include the construction of the Christmas Creek to Cloudbreak section of PTL and the new substation at Cloudbreak.

The project construction period, from site mobilisation to commissioning and completion, is anticipated to take 12 months.

Full remote control, operation and monitoring of the PTL will be provided from the remote operations facility at Newman Power Station, which has a full complement of staff including a Regional Manager, operations and maintenance technicians and administration staff. Outside normal work hours (07:00 - 18:00 seven days per week) a configured laptop allows the duty operator to respond to alarms and condition changes without having to attend the site.

## 5 Public Interest Information

The proposed route of the PTL crosses tenure of two mining companies, two pastoral leases and part of a Native Title Claim area.

AETC has applied for miscellaneous licences under the Mining Act to support the construction and operation of the proposed infrastructure.

Environmental impact is expected to be minimal as there will be no broad acre clearing, de-watering or land forming during construction. There will be no pollutants emitted by the operation of the PTL.

AETC recognises the importance of the protection of Aboriginal heritage and will take the necessary steps to reduce the impact of the proposed works on areas of importance to traditional owners.

The proposed works will extend the high voltage electricity network and provide an increased opportunity to support future economic development in the Pilbara region.

## 6 Licence Supply and Operating Areas

A schematic of the proposed PTL can be seen in Figure 1. The licence operating area is shown in Figure 2.

**Figure 1: Power transmission line schematic**

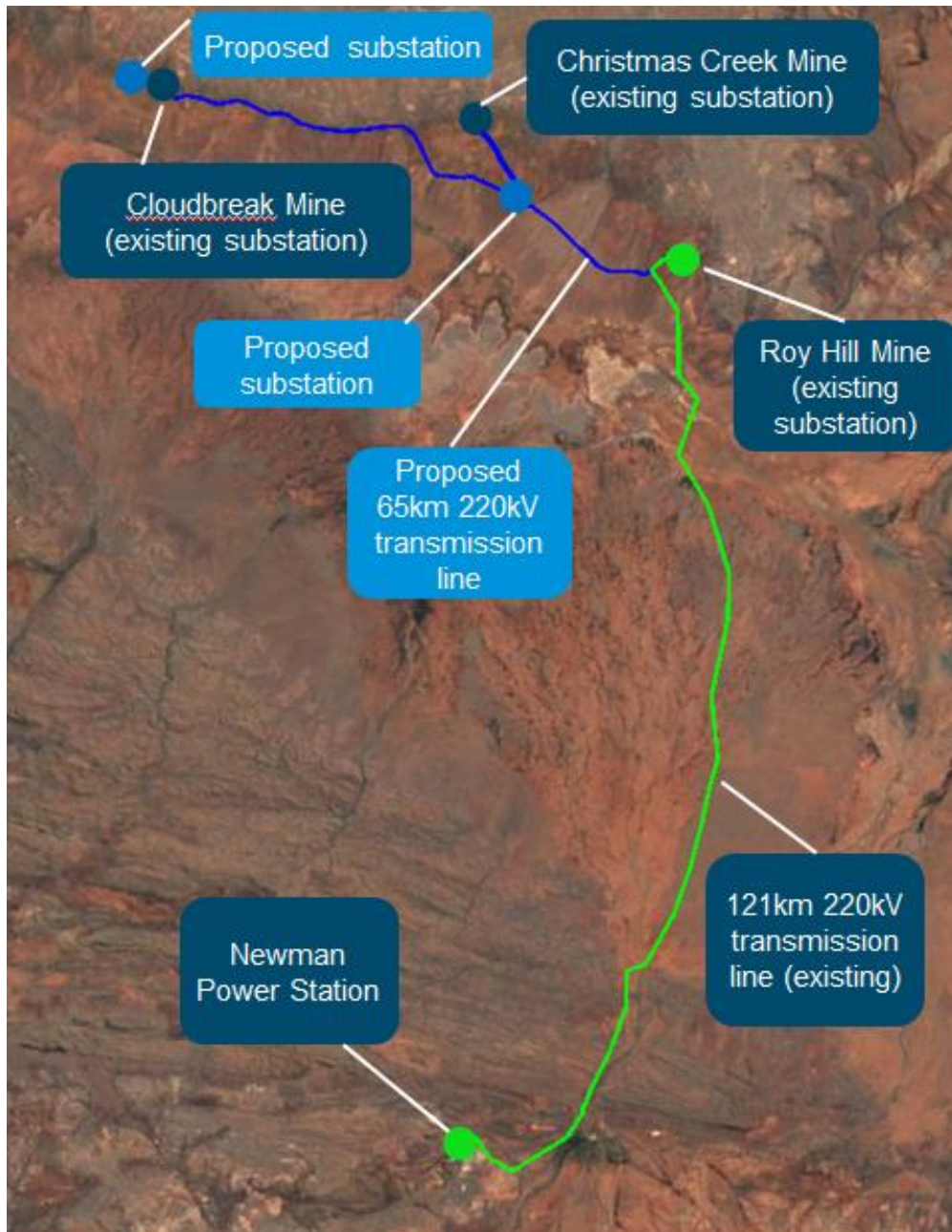


Figure 2: Licence operating area

